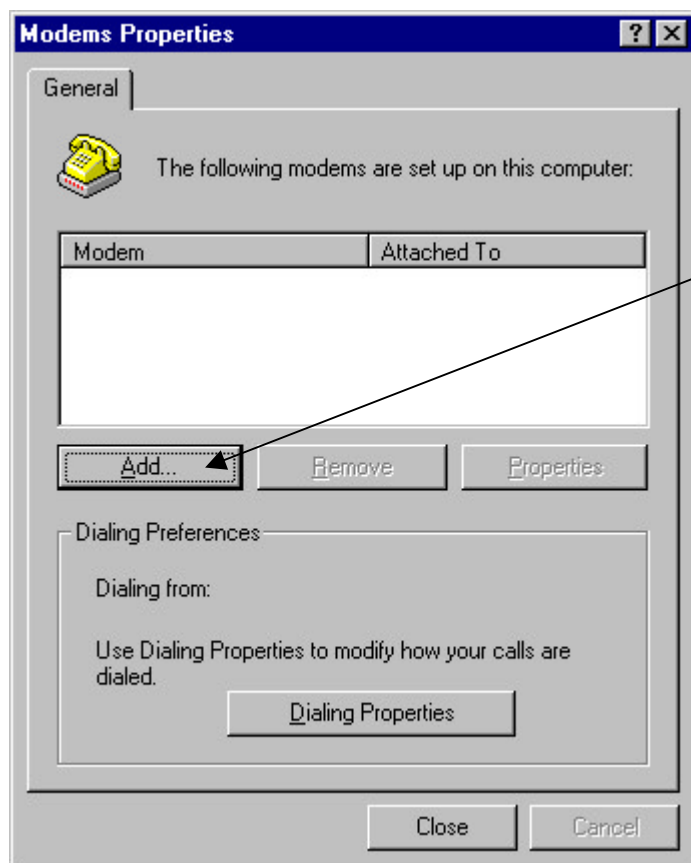


How to install the TC35 modem under WIN NT4.0

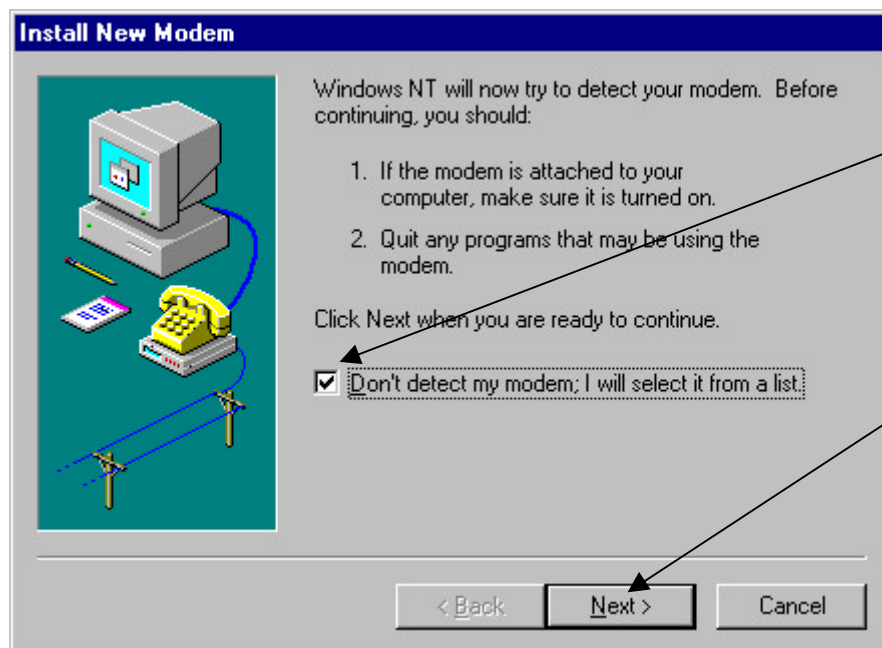
To install the TC35 as a modem, you need the mdmtc35.inf file. Please store the file on floppy disk or hard drive.

Double-click the "Modems" icon in the "Control panel"

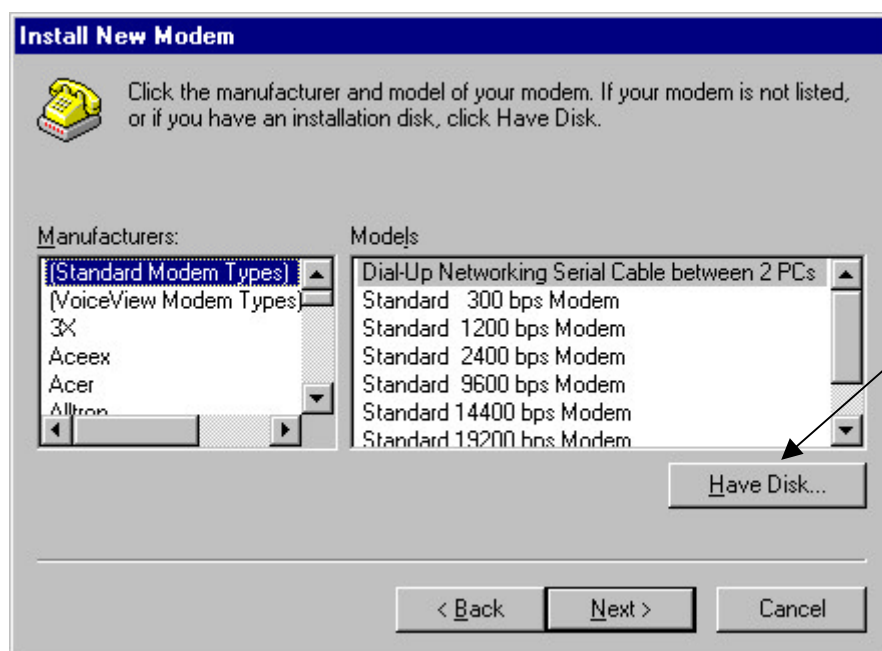
Start → Settings → Control → Modems



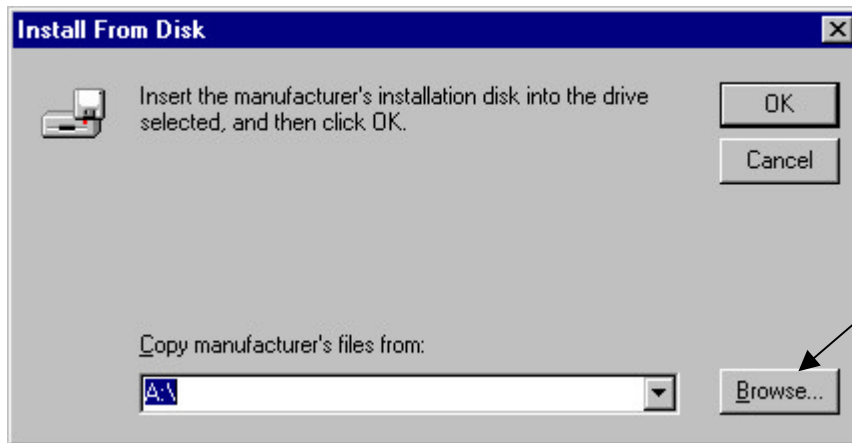
Click **Add** to install the driver.



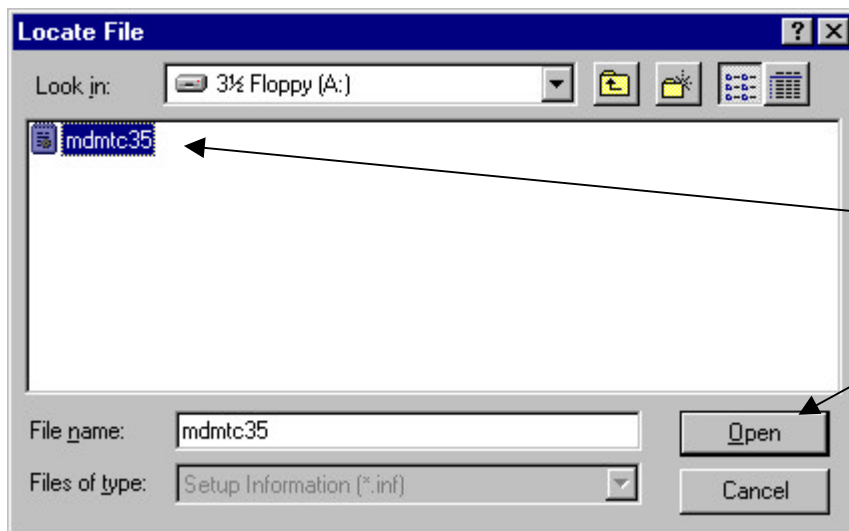
Check the control box
"Don't detect my modem;
I will select it from a list"
and click the "Next"
button...



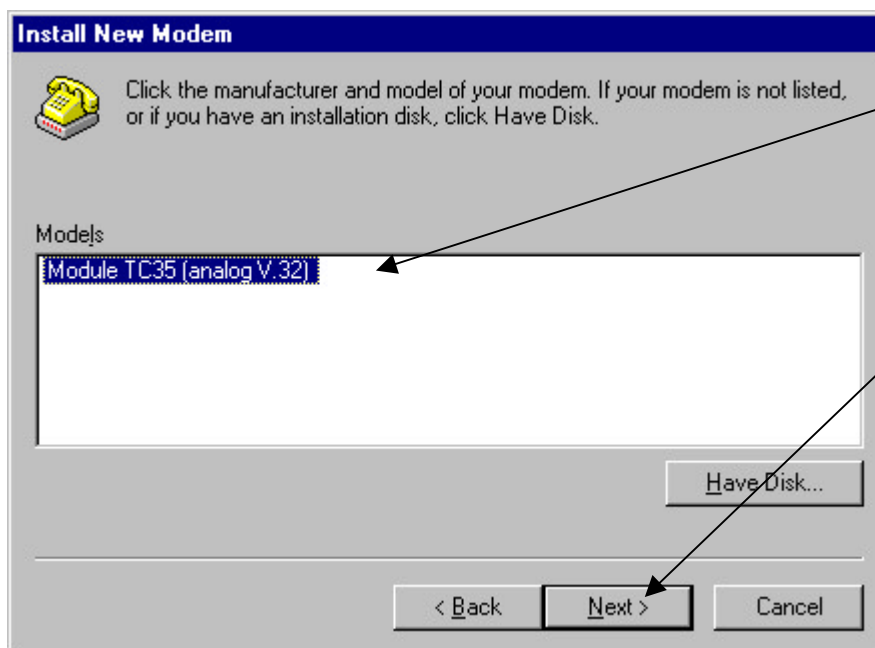
Click on **Have Disc** to select
an external driver from disk or
floppy.



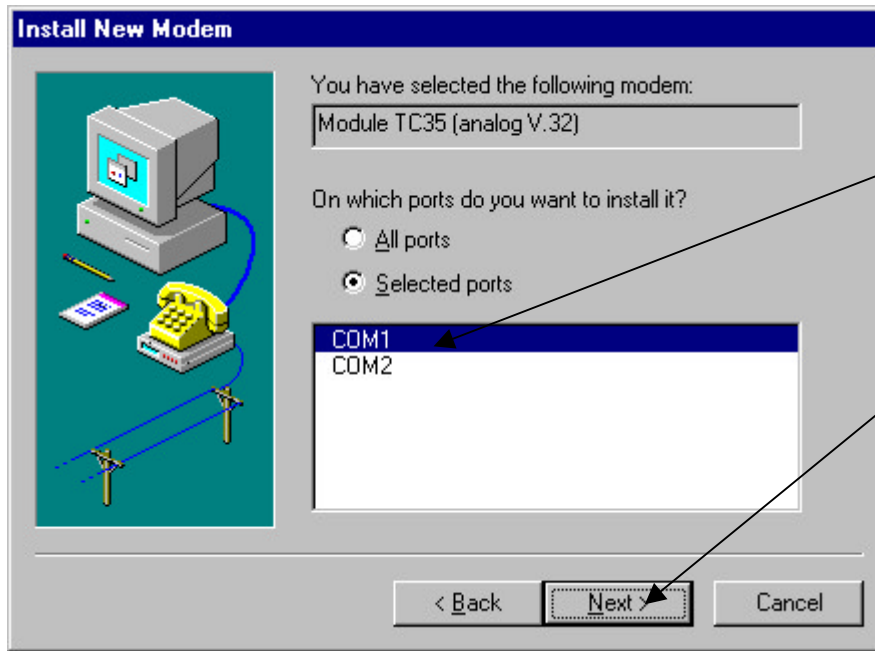
Enter the drive and folder the mdmtc35.inf file is stored in. With the "Browse" button you can search the file, should you be uncertain as to where you stored it.



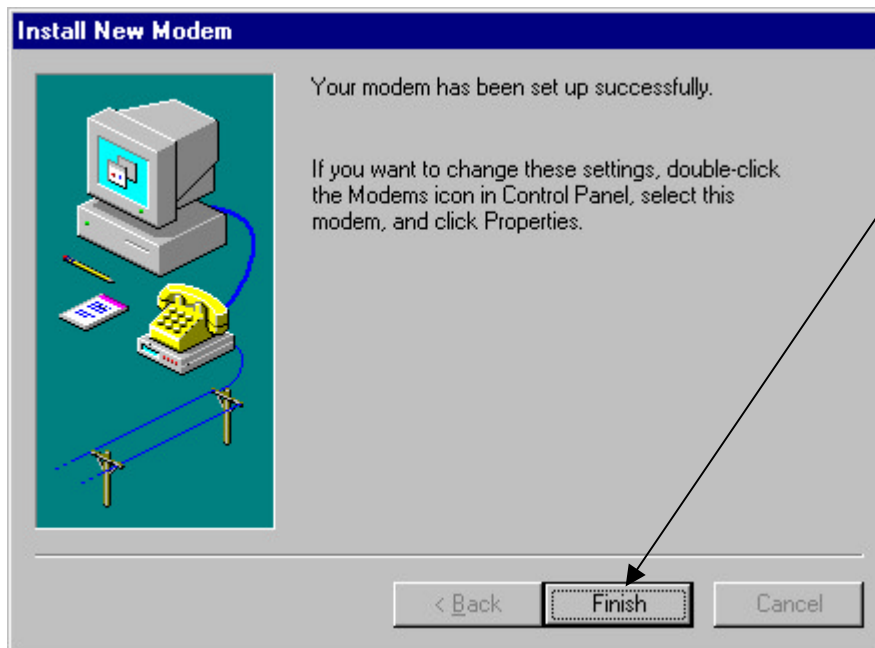
Choose the **inf** file. Then **Open**.



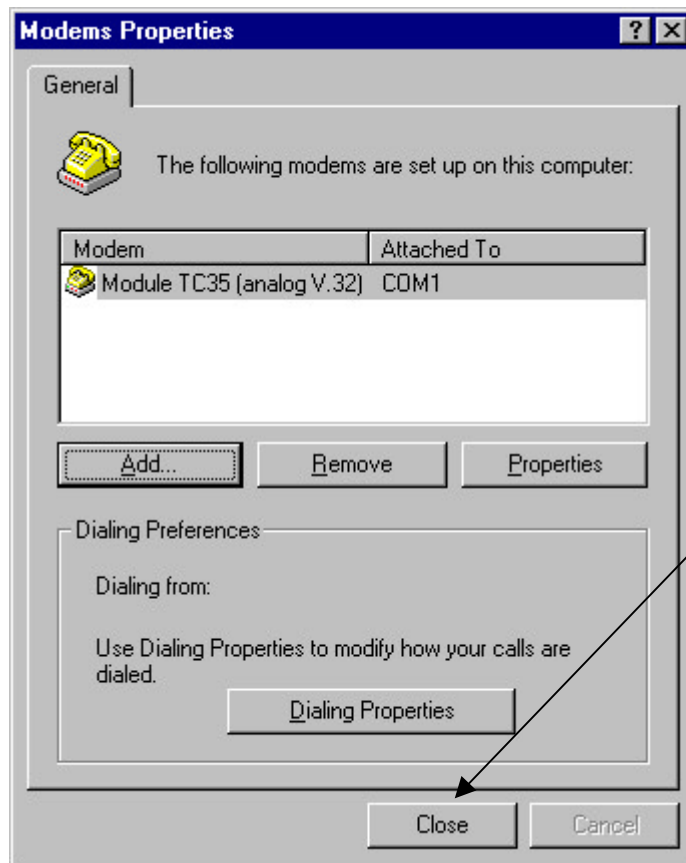
Check if you have selected the **right driver**. Then **Next**.



Choose the serial interface
e.g. COM1 your mobile
is connected to.
Click on **Next**



Finish the installation.



Now the modem has been successfully installed.
Module TC35 (analog V.32)
Click the "**C**lose" button...